



## Avalanche®-CRISPR Transfection Reagent

### Cas9 Gene and sgRNA Delivery

One of the most important factors that determines a successful CRISPR-Cas9 mediated genome targeting is the efficiency of delivering functional Cas9 gene and sgRNA into mammalian cells. Our proprietary reagent formulation is specifically developed for maximizing CRISPR-Cas9 gene editing and delivery efficiency across cell lines and cell types.

### Features

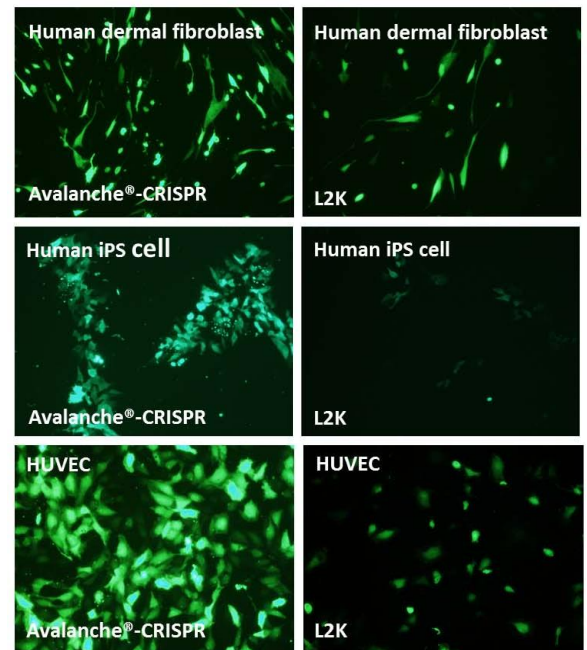
- Specifically designed for CRISPR-Cas9 gene editing transfection in mammalian cells
- Broad spectrum for the transfection of large plasmid (>9.0 kb), mRNA, sgRNA, and/or other type of nucleic acids, which is best for co-transfection of large plasmids with either small plasmids or small RNA, such as sgRNA
- Great for CRISPR-Cas9 gene editing in difficult-to-transfect cells, such as primary cells, suspension culture cells, or neural cells

### Sample Requests

- Go to [ezbiosystems.com/contact/free-sample-request](http://ezbiosystems.com/contact/free-sample-request) for a free sample

### How To Order

- Email [order@ezbiosystems.com](mailto:order@ezbiosystems.com)
- Submit RFQ at [ezbiosystems.com](http://ezbiosystems.com)



*Avalanche®-CRISPR outperforms other brands of transfection reagents on transferring Cas9/GFP co-expression plasmids into some difficult-to-transfect cells. GFP expression in different type of cells after transfecting pCas9-GFP plasmid (Addgene #44719) by using Avalanche®-CRISPR and Lipofectamine®. The cells tested are: Human dermal fibroblast, Human iPS cell, and HUVEC (Human Umbilical Vein Endothelial Cell).*